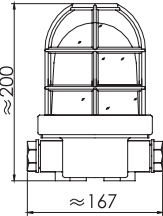
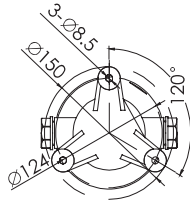


CCD1-2/CCD15-2

白炽舱顶灯 INCANDESCENT PENDANT LIGHT



CCD1-2



■ 适用范围：

该灯具适用于各类船舶中的甲板、走道等潮湿场所或舱室中使用。

■ 产品特性：

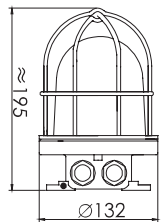
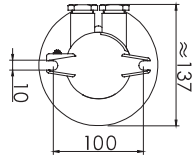
1. 灯具结构简单，防水性能良好。
2. 电缆外径 $\varnothing 10 \sim \varnothing 12\text{mm}$ 。

■ 采用标准及产品认证：

1. 符合国际 IEC60598-1-2008 标准。
2. 符合《钢质海船入级规范》。
3. 符合 GB/T3027《船用白炽照明灯通用技术条件》。
4. CCD1-2 通过中国船级社 (CCS) 型式认可。



CCD15-2



■ The scope of application:

Applied to the illumination for deck, side walk and wet places or cabin of ships.

■ Products feature:

1. The structure of light is simple, has good waterproof function.
2. Cable outside diameter is $\varnothing 10 \sim \varnothing 12\text{mm}$.

■ Adopt standard and products certification:

1. Conform to INTERNATIONAL STANDARD IEC60598-1-2008.
2. Conform to RULES FOR CLASSIFICATION OF SEA-GOING STEEL SHIPS.
3. Conform to GB/T3027 Marine incandescent lamps General technical requirements.
4. CCD1-2 has been type approval of China Classification Society (CCS).

型号 Type	CCD1-2		CCD15-2	
颜色 Color	透明、磨砂、乳白、红、绿、蓝、黄 Transparent, Frosted, Opal, Red, Green, Blue Yellow		透明、红、绿 Transparent Red、Green	
电压 Voltage (V)	220			
光源 Light source	白炽灯 Incandescent lamp	节能灯 Energy-saving lamp	白炽灯 Incandescent lamp	节能灯 Energy-saving lamp
功率 Power(W)	60	8	60	8
灯座 Lamp holder	E27			
材质 Material	工程塑料 Engineering Plastic		铜 Brass	
防护等 Protection class	IP55		IP56	
重量 (Weight)(Kg)	1.0		1.9	