



CXH4-1

■ **适用范围:**

该灯具适用于各类船舶在苏伊士运河作夜间航行灯光信号联络之用。

■ **产品特性:**

外壳采用高强度工程塑料,具有水密性好,耐腐,抗冲击等特点;灯罩采用聚碳酸酯制成。灯具安装方便,灯泡更换便捷,底部设有自动漏水孔。电缆外径  $\varnothing 10\text{mm}$ 。

■ **采用标准:**

符合《1972年国际海上避碰规则》;符合国际 IEC60598-1-2008 标准;符合国家 GB/T3028-2012 标准;符合《钢质海船入级规范》。



CXD7

■ **The scope of application:**

This lamp is suitable for communication with Morse signal light recognition for all kinds of vessels.

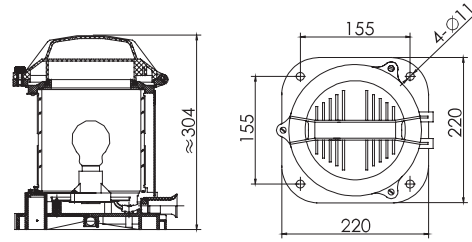
■ **Products feature:**

The shell is made of brass or aluminum by mold casting. The lampshade adopts poly carbonate material which has the feature of ultraviolet radiation resistance and non-discoloring. This lamp adopts sealing structure, good water resistance. Cable outside diameter  $\varnothing 11\text{mm}$ .

■ **Adopt standard and products certification:**

Conform to INTERNATIONAL REGULATIONS FOR PREVENTING COLLISIONS AT SEA 1972. Conform to international standard of IEC60598-1-2008.

Conform to national standard of GB/T3028-2012. Conform to RULES FOR CLASSIFICATION OF SEA-GOING STEEL SHIPS. Approved by China Classification Society (CCS) and Type Approval of China Fishery Inspection Bureau. (ZY)



■ **he scope of application:**

This light fits for all types of ships for night navigation lights as signal contact purposes in the Suez Canal.

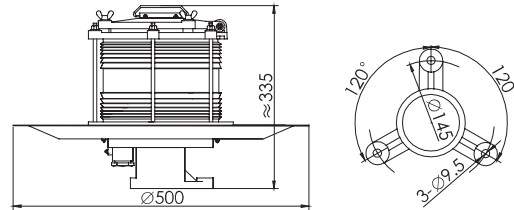
■ **Products feature:**

The shell adopts high-strength engineering plastic, with watertight, good corrosion resistance, impact resistance and other characteristics. The lampshade adopts PC material. This lamp can be installed conveniently, easy to replace the bulb. There are automatic leak holes on the bottom of light. Cable outside diameter  $\varnothing 10\text{mm}$ .

■ **Adopt standard:**

Conform to INTERNATIONAL REGULATIONS FOR PREVENTING COLLISIONS AT SEA 1972. Conform to international standard of IEC60598-1-2008. Conform to national standard of GB/T3028-2012.

Conform to RULES FOR CLASSIFICATION OF SEA-GOING STEEL SHIPS.



■ **适用范围:**

该灯具适用于各类船舶作莫氏信号灯光通讯识别之用。

■ **产品特性:**

外壳采用铜或铝,用模具铸造成型;灯罩采用聚碳酸酯制成,具有抗紫外线,不变色等特点;灯具采用的密封结构,防水性能良好。电缆外径  $\varnothing 11\text{mm}$ 。

■ **采用标准及产品认证:**

符合《1972年国际海上避碰规则》;符合国际 IEC60598-1-2008 标准;符合国家 GB/T3028-2012 标准;符合《钢质海船入级规范》。通过中国船级社 (CCS) 和中国渔检局 (ZY) 型式认可。

名称 Name	苏伊士运河艉灯 SUEZ Canal Stern light	莫氏信号灯 Morse signal light
型号 Type	CXH4	CXD7
可见距离 Visibility	3n.m	> 5n.m
水平光角 Level arc	135°	360°
颜色 Color	红 Red	明 Transparent
电压 Voltage/ 功率 Power	220V/65W	220V/3X25W
灯座 Lamp holder	B22d	
防护等级 Protection class	IP56	
重量 Weight	2.7kg	7.5kg